



MIGHTY EARTH



RAPID RESPONSE Palm Oil Report

Report 37

December 2021



Prepared with support from

Waxman

MapHubs



Table of Contents

Cases identified using Planet and other spatial imagery

Indonesian Companies

New cases

PT Multipersada Gatramegah: Musim Mas	3
PT Kencana Alam Permai: Dharma Satya Nusantara Tbk (DSN)	6

Supply chain information:

Supply chain information included in Rapid Response reports is based on the latest public versions of mill disclosures, recent export data, and company grievance logs. Mighty Earth encourages companies to send updated versions of mill disclosures as soon as they become available and to share any decision to suspend relations with a given group/company listed in those mill disclosures with rapidresponse@mightyearth.org.

Mighty Earth is now including biofuel companies and other manufacturers in the supply chain tables of Rapid Response reports, as these companies have both direct and indirect trading relationships with groups highlighted in these reports and should be filing grievances on these cases. These companies are listed in the "Supply Chain Information" tables.

New Case

Group: Musim Mas

PT Multipersada Gatramegah

Concession location: (-0.834820, 114.719495)

Deforestation and/or peat development

Report	Deforestation (ha)	Peat development (ha)	Peat forest development (ha)	Clearance prep/Stacking lines (ha)	Time period
Report 37	6.6 (HCS)	-	-	-	May 2021 - July 2021

Satellite imagery (see below) shows that between May and July 2021 a total of 6.6 hectares of forest (HCS) was cleared in the PT Multipersada Gatramegah concession. (Imagery: 2021 Planet Labs Inc)

Supply Chain Information

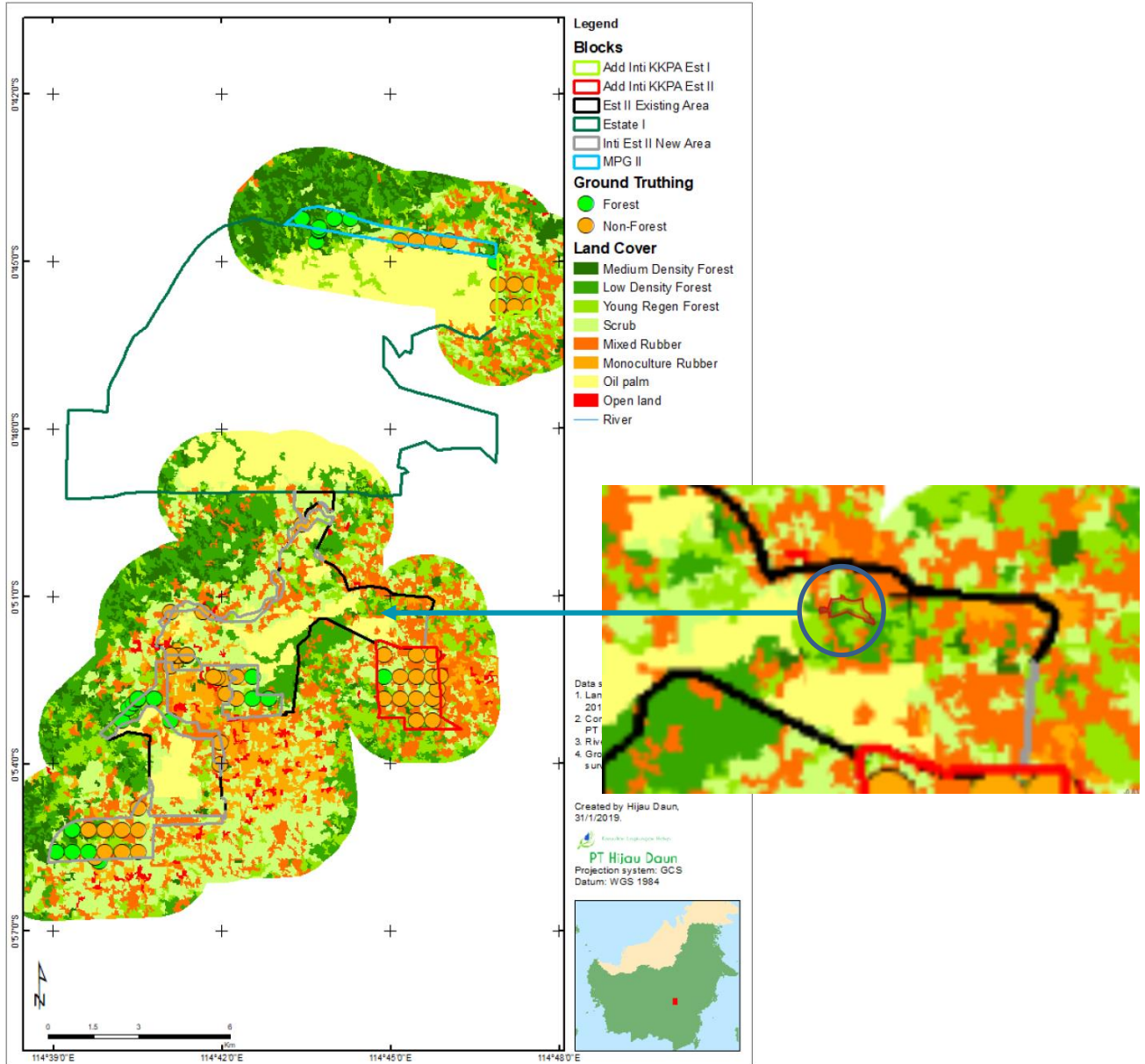
Company/Group	Trader	Biofuel / other manufacturers	Consumer Brand
PT Multipersada Gatramegah	AAK, ADM, Bunge, Cargill Fuji Oil, KLK, Musim Mas, Pacific Interlink	Lipsa, Neste	Danone, General Mills, Hersheys, Johnson& Johnson, Kellogg's, Nestle, Pepsico, PZ Cussons, Reckitt Benckiser, Upfield, Vandermoortele
Musim Mas	AAK, ADM, Bunge, Cargill, Cofco Int, Fuji Oil, Goodhope, KLK, Musim Mas, IOI, Itochu, LDC, Olam, Pacific Interlink, Sime Darby, Wilmar	BASF, Lipsa, Neste, Nisshin Oillio, Oleon	Colgate, Danone, Ferrero, Friesland Campina, General Mills, L'Oreal, Hersheys, Johnson& Johnson, Kellogg's, Mars, Mondelez, Nestle, Pepsico, P&G, PZ Cussons, Reckitt Benckiser, Unilever, Upfield, Vandermoortele

Background information on Ownership and the Concession

PT Multipersada Gatramegah is part of the Musim Mas Group¹

According to a Public Summary of an Integrated High Conservation Value / High Carbon Stock Approach Assessment for a concession extension to PT Multipersada Gatramegah, the existing concession has already gone through a 'HCV-HCSA review.'²

A map of the resulting HCS areas for the PT Multipersada Gatramegah concession - by HCS forest classifications of Medium Density Forest, Low Density Forest and Young Regenerating Forest - is published on page 21 of the Public Summary (see maps below, which highlights the area of recent deforestation).



1. Musim Mas website, www.musimmas.com/musim-mas-mill-successfully-audited-against-rspo-pc-2018

2. HCVRN website, <https://hcvrn.egnyte.com/dl/hHKL4SHZUn>

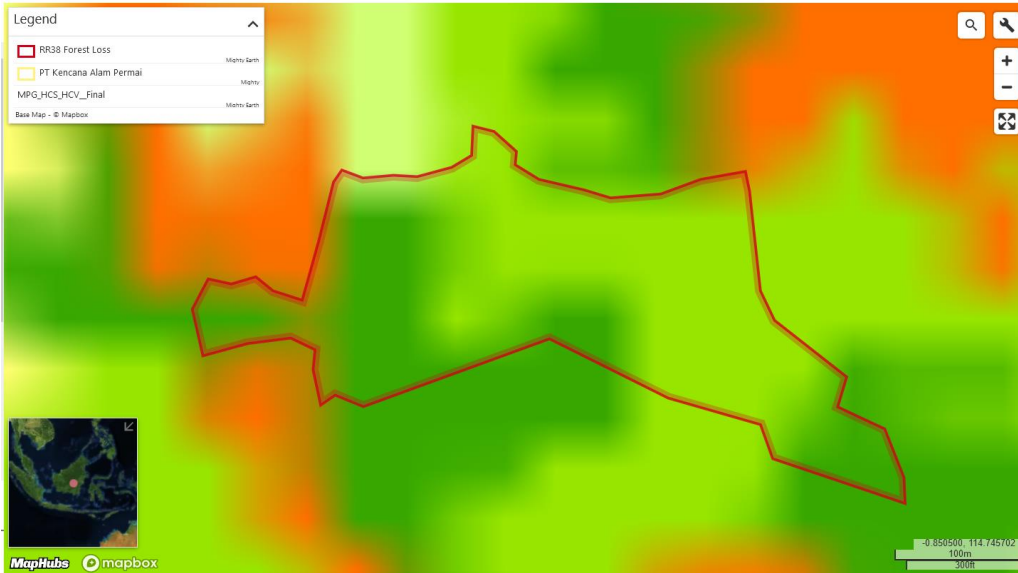
Mapping analysis



Alert Imagery (before and after satellite images)

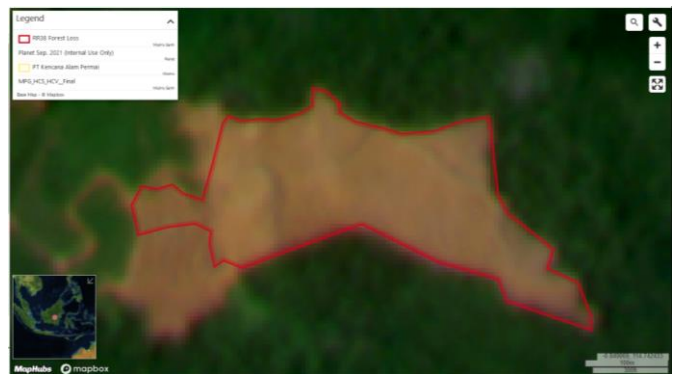
Clearance location: (-0.851124, 114.744981)

The map and imagery below shows that the area of deforestation within areas identified as High Carbon Stock (HCS).



Date: May 2021

Date: September 2021



New Case

Group: Dharma Satya Nusantara Tbk (DSN)

PT Kencana Alam Permai

Concession location: (-0.257472, 111.237668)

Deforestation and/or peat development

Report	Deforestation (ha)	Peat development (ha)	Peat forest development (ha)	Clearance prep/Stacking lines (ha)	Time period
Report 37	8.5 (HCS)	-	-	-	May 2021 - September 2021

Satellite imagery (see below) shows that between May and Sept 2021 a total of 8.5 hectares of forest (HCS) was cleared in the PT Kencana Alam Permai concession. (Imagery: 2021 Planet Labs Inc)

Supply Chain Information

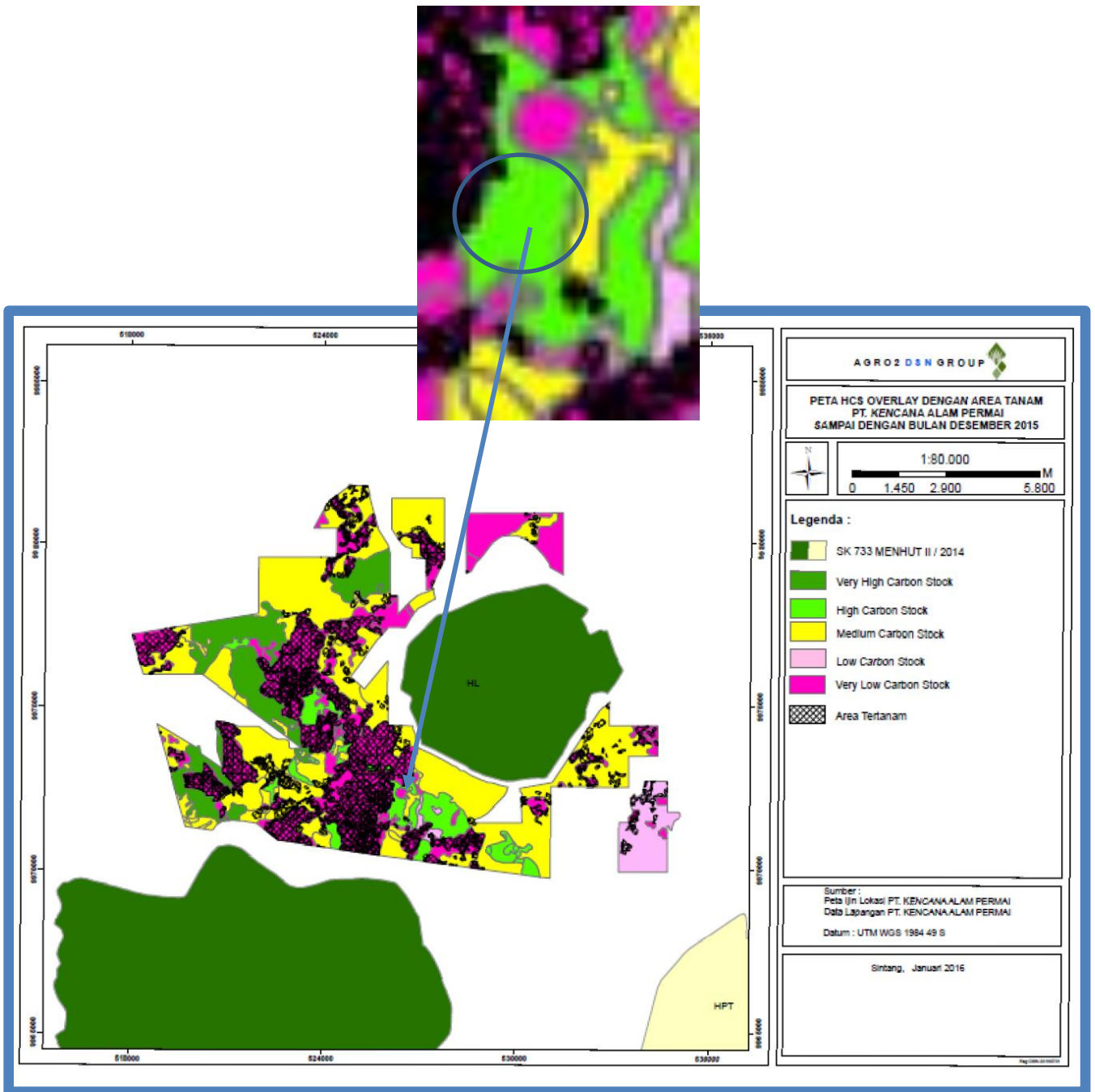
Company/Group	Trader	Biofuel / other manufacturers	Consumer Brand
PT Kencana Alam Permai	-	-	-
DSN	AAK, ADM, Apical, Bunge, Cargill, Cofco Int, IFFCO, IOI, KLK, LDC, Sime Darby, Wilmar	Oleon	Colgate, Danone, Ferrero, Friesland Campina, General Mills, Hershey's, Johnson & Johnson, Mondelez, Nestle, Pepsico, P&G, PZ Cussons, Reckitt Benckiser, Unilever, Upfield

Background information on Ownership and the Concession

PT Kencana Alam Permai is 99.92% owned by Dharma Satya Nusantara Tbk (DSN Group).³

A DSN map showing areas identified as 'High Carbon Stock' within PT Kencana Alam Permai is included in a report published on the RSPO website - the 2016 report⁴ is described as '*prepared by PT Kencana Alam Permai*.'

The main map below shows the areas of High Carbon Stock and the map extract shows the High Carbon Stock forest areas cleared between May 2021 and September 2021.



3. DSN AR 2020, https://dsn.co.id/wp-content/uploads/2021/03/FA_Annual_Report_DSN_2020_final.pdf

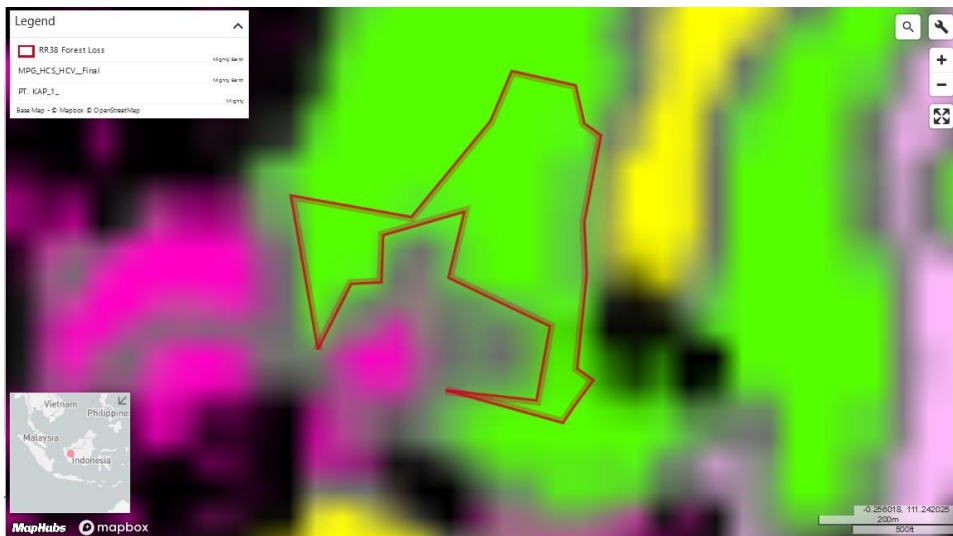
4. PT Kencana Alam Permai report, www.rspo.org/acop/2015/pt-dharma-satya-nusantara/Summary%20Report%20of%20GHG%20PT.%20KAP.pdf

Mapping analysis



Clearance location: (-0.257472, 111.237668)

The map below shows area of deforestation within areas identified as High Carbon Stock (HCS) forest.



Date: May 2021

Date: Sept 2021

