



MIGHTY EARTH



RAPID RESPONSE Palm Oil Report

Report 31

November 2020



Prepared with

MapHubs
Waxman

Table of Contents

Cases identified using Landsat and Planet imagery

Malaysian Companies

<i>New Cases</i>	3
Perbadanan Kemajuan Pertanian Negari Pahang (owner of LKPP Corporation Sdn Bhd)	
PKPP Plantation Sdn Bhd (Cherating)	6
Perbadanan Kemajuan Pertanian Negari Pahang (owner of LKPP Corporation Sdn Bhd) (Tembeling)	

Supply chain information:

Supply chain information included in Rapid Response reports is based on the latest public versions of mill disclosures, recent export data and grievance logs. Mighty Earth encourages companies to send updated versions of mill disclosures as soon as they become available and to share any decision to suspend relations with a given group/company listed in those mill disclosures with rapidresponse@mightyearth.org.

Mighty Earth is now including biofuel companies in the supply chain tables of Rapid Response reports, as these companies have both direct and indirect trading relationships with groups highlighted in these reports and should be filing grievances on these cases. These biofuel companies are listed in the "Traders and Biofuel Companies" tables.

New Case

Group: Perbadanan Kemajuan Pertanian Negeri Pahang (owner of LKPP Corporation Sdn Bhd)

PKPP Plantation Sdn Bhd (Cherating)

Concession location: 4.179128, 103.343949

Deforestation and/or peat development

Report	Deforestation (ha)	Peat development (ha)	Peat forest development (ha)	Clearance prep/Stacking lines (ha)	Time period
Report 31	22	-	-	-	March 3, 2019 - October 27, 2020 (majority since August 2020)

Satellite imagery (see below) shows that between March 3, 2020 and October 27, 2020 a total of 22 hectares of forest was cleared in the PKPP Plantation Sdn Bhd (Cherating) concession. (Imagery: NASA, Landsat 8)

Supply Chain Information

Company/Group	Trader	Biofuel Company	Consumer Brand
PKPP Plantation Sdn Bhd	-	-	-
LKPP Corporation Sdn Bhd	AAK, ADM, Bunge, Cargill, COFCO Int., Felda IFFCO, Fuji Oil, IOI, Itochu, KLK, Lipsa, Louis Dreyfus, Mewah, Musim Mas, Oleon, PIL, Wilmar	Neste	Avon, Colgate-Palmolive, Danone, FrieslandCampina, General Mills, Hershey, Johnson & Johnson, Kellogg, Mars, Mondelez, Nestle, Nisshin Oillio, PepsiCo, PZ Cussons, Reckitt Benckiser, Unilever, Upfield, Vandemoortele

Ownership Information

The PKPP Plantation Sdn Bhd (Cherating) and LKPP Corporation Bhd Sdn are both wholly owned by Perbadanan Kemajuan Pertanian Negeri Pahang (PKNP).¹ See Rapid Response Report 30 for previous case information on PKPP Plantation (Sungai Charu.)

1. Corporate profile for PKPP Plantation Sdn Bhd; LKPP Corporation Sdn Bhd website, www.lcsb.com.my

Case Notes

The previous Rapid Response report, Report 30, released August 6, 2020 - included an initial case on PKPP Plantation Sdn Bhd at a different location: Sungai Charu. Most of the deforestation in the new location presented in this report, Cherating, has taken place after August 6, 2020.

A total of 10 corporations linked to PKPP Plantation Sdn Bhd's parent group Perbadanan Kemajuan Pertanian Negeri Pahang (PKNP), have now filed a grievance on the original PKPP case: ADM, Bunge, Cargill, Fuji Oil, IOI, KLK, LDC, Musim Mas, Neste and Pacific Interlink (PIL.)

In Bunge's [grievance log](#), for example, the company states: "A meeting with a representative of Perbadanan Kemajuan Pertanian Negeri Pahang's (PKNP) board was held on September 9th. Follow up meeting is scheduled for October 5th. We have requested that LKPP/PKPP to publish and commit to an NDPE policy, moratorium on clearing for palm and agree a recovery plan."

Companies that have so far failed to register the original PKPP case as a grievance are AAK, COFCO Int., Felda IFFCO, Itochu, Lipsa, Mewah, Oleon and Wilmar.

In the case of Wilmar, the company's grievance procedure (June 2019) requires the company to "prepare a grievance dossier and contact [the] Grievance Raiser... within five working days of receiving the original grievance and within three weeks submit a response letter to the Grievance Raiser to update on the case" after engaging with the supplier and stakeholders to verify the case. Under Wilmar's Suspend then Engage approach, which took effect in January 2019, "New grievances with verified proof of deforestation or peatland development will result in an immediate suspension of the supplier at the Group level." **It is now almost three months since Wilmar received the original grievance on this case and the company has yet to publicly disclose whether it has now suspended the PKNP Group, as required by its grievance procedure. The company has also not communicated such a decision to Mighty Earth.**

The last communication we received from Mewah on the original case was that they were waiting for a response from their supplier. No such communication has been received from AAK, COFCO Int., Felda IFFCO, Itochu, Lipsa, Mewah or Oleon.

1. Corporate profile for PKK Plantation Sdn Bhd; LKPP Corporation Sdn Bhd website, www.lcsb.com.my

Mapping analysis

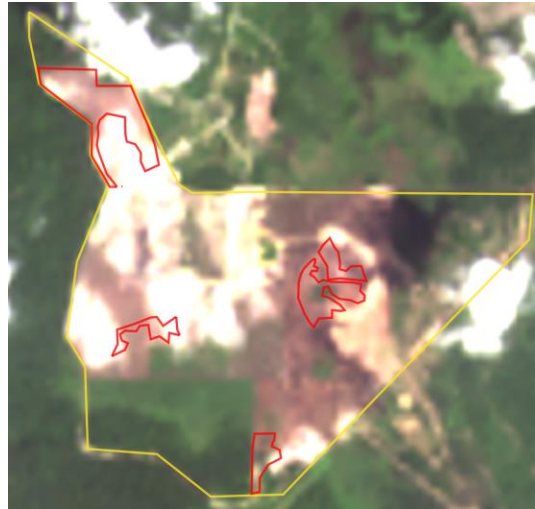
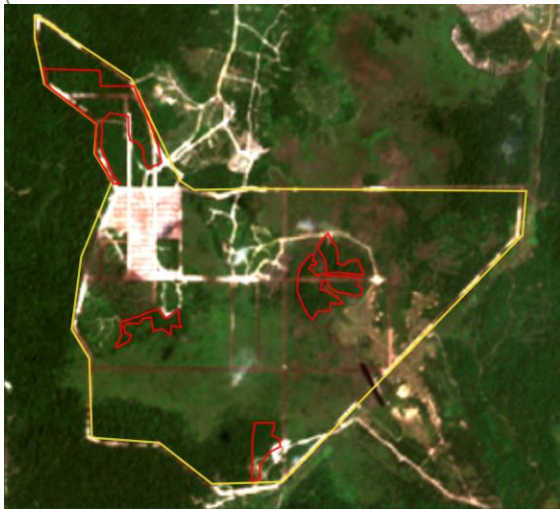


Alert Imagery (before and after satellite images)

Clearance location: (4.179128, 103.343949)

Date: March 3, 2020

Date: October 27, 2020



New Case

Group: Perbadanan Kemajuan Pertanian Negeri Pahang (Tembeling)

Concession location: 4.299997, 102.643704

Deforestation and/or peat development

Report	Deforestation (ha)	Peat development (ha)	Peat forest development (ha)	Clearance prep/Stacking lines (ha)	Time period
Report 31	71	-	-	-	Period 1 (June-Nov 2019) - Period 2 (Dec 2019-May 2020)
	22	-	-	-	Period (Dec 2019-May 2020) - Oct 27, 2020

3-month composite Planet satellite imagery (see below) shows that between the period of June-November 2019 and the period of December-May 2020, a total of 71 hectares of forest was cleared in the Perbadanan Kemajuan Pertanian Negeri Pahang (PKNP) (Tembeling) concession. A further 22 hectares of forest was cleared between the 3-month period of December-May 2020 and October 27, 2020 (Imagery: 2019-2020 Planet Labs Inc. and NASA, Landsat 8)

Supply Chain Information

Company/Group	Trader	Biofuel Company	Consumer Brand
Perbadanan Kemajuan Pertanian Negeri Pahang (PKNP)	-	-	-
LKPP Corporation Sdn Bhd	AAK, ADM, Bunge, Cargill, COFCO Int., Felda IFFCO, Fuji Oil, IOI, Itochu, KLK, Lipsa, Louis Dreyfus, Mewah, Musim Mas, Oleon, PIL, Wilmar	Neste	Avon, Colgate-Palmolive, Danone, FrieslandCampina, General Mills, Hershey, Johnson & Johnson, Kellogg, Mars, Mondelez, Nestle, Nisshin OilliO, PepsiCo, PZ Cussons, Reckitt Benckiser, Unilever, Upfield, Vandemoortele

Ownership Information

The concession is owned by Perbadanan Kemajuan Pertanian Negeri Pahang (PKNP), the parent group of LKPP Corporation Sdn Bhd and PKPP Plantation Sdn Bhd¹ See Rapid Response Report 30 for previous case information on PKPP Plantation (Sungai Charu.)

1. Corporate profile for PKPP Plantation Sdn Bhd; LKPP Corporation Sdn Bhd website; PKNP reports

Mapping analysis

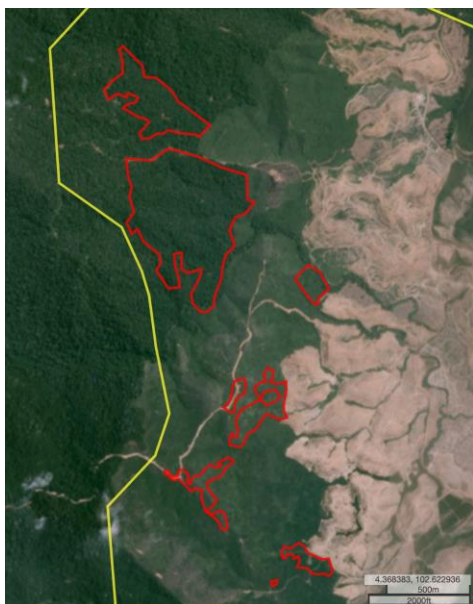


Alert Imagery (before and after satellite images)

Clearance location: (4.373687, 102.625415)

Date: Period of June-Nov 2019
(based on 3-month composite Planet image)

Date: Period of Dec 2019-May 2020
(based on a 3-month composite Planet image)



Mapping analysis (cont.)

Alert Imagery (before and after satellite images)

Clearance location: (4.378272, 102.622548)

Date: Period of Dec 2019-May 2020
(based on a 3-month composite
Planet image)

Date: Oct 27, 2020

