



MIGHTY EARTH



RAPID RESPONSE Palm Oil Report

Report 28

June 2020



Prepared with

MapHubs
Waxman

Table of Contents

Cases identified using Sentinel imagery

Indonesian Companies

New Case

Tunas Baru Lampung: PT Samora Usaha Jaya (A)	5
----------------------------------------------	---

Unresolved Cases

Tunas Baru Lampung: PT Samora Usaha Jaya (B)	7
KPN Group: PT Sumatera Unggul Makmur	9
QL Resources Bhd: PT Pipit Mutiara Indah	11

Additional cases identified using filtered GLAD alerts

New Cases – No Known Supply Chain Links

Mukti Group : PT Asia Mukti Lestari	13
-------------------------------------	----

Repeat Cases – Known Supply Chain Links

PT Suryaborneo Mandiri: PT Permata Sawit Mandiri	14
Salim/IndoGunta: PT Rimbun Sawit Papua	14
Mulia Sawit: PT Persada Era Agro Kencana	14
Makin Group: PT Mekar Karya Kahuripan	14
Salim/IndoGunta: PT Rimbun Sawit Papua	14
Widya Corporation: PT Mulia Inti Perkasa	14
Starmas Sentosa Mandiri: PT Agrindo Sukses Sejahtera	14
Korompis Family: PT Berau Karetindo Lestari	14
Capitol Group: PT Medcopapua Hijau Selaras	14
Samling Group: PT Tunas Borneo Plantations	14
Bumitama Group: PT Damai Agro Sejahtera	14
Dharma Satya Nusantara: PT Putra Utama Lestari	14
Hayel Saeed Anam Group: PT Megakarya Jaya Raya	14
Samuel International Group: PT Bina Sarana Sawit Utama	14
Genting Plantations Bhd: PT Citra Sawit Cemerlang	14
Fangiono family companies: PT Tirta Madu Sawit Jaya	14
Pinehill Pacific Bhd: PT Makmur Jaya Malindo	15
Cilandry Anky Abadi Group: PT Citra Agro Abadi	15

Table of Contents

Additional cases identified using filtered GLAD alerts (continued)

Repeat Cases – Known Supply Chain Links (continued) 15

Alas Kusuma Group: PT Kusuma Alam Sari	15
Green Yield Pte Ltd: PT Tri Investama	15
CB Industrial Product Holding: PT Jaya Jadi Utama	15
Henan Jiujiu Chemical Co Ltd & PT Citra Makmur Sentosa: PT Palembang Segar Lestari	15
Pundi Group: PT Pinang Witmas Abadi	15
Dnist Surya Nusantara: PT Sabhantara Rawi Sentosa	15
PT Sawit Sumbermas Sarana Tbk: PT Sawit Mandiri Lestari	15
Indonusa Group: PT Internusa Jaya Sejahtera	15
Salim Group: PT Agro Subur Permai	15
Mulia Sawit Group: PT Persada Era Agro Kencana	16
Bukit Berlian Plantation Group: PT Ginang Fohu Plantation	16
Salim/IndoGunta: PT Rimbun Sawit Papua	16
Samling Group: LPF/0007 Samling Jelalong (OP)	16
Samling Group: LPF/0008 Marudi & Batu Belah	16
Rimbunan Hijau Group: Timrest Sdn Bhd	16

Repeat Cases – No Known Supply Chain Links 17

Unknown Group: PT Kayan Plantation	17
Unknown Group: PT Kukar Commodities Worldwide	17
Unknown Group: PT Ichiko Agro Lestari	17
Unknown Group: PT Tualang Raya	17
Unknown Group: PT Artanusa Agrindo	17
Unknown Group: PT Sawit Berkat Sejahtera	31
Unknown Group: PT Sebaung Sawit Plantation	17
Unknown Group: PT Gapura Alas Lestari	17
Unknown Group: PT Gapura Alas Lestari	17
Unknown Group: PT Bhakti Usaha Dinamika	17
Unknown Group: PT Banyan Tumbuh Lestari	17
Unknown Group: Koperasi Usaha Mandiri	17
Unknown Group: Koperasi Bakung Agri	17

Supply chain information:

Supply chain information included in Rapid Response reports is based on the latest public versions of mill disclosures, recent export data and grievance logs. Mighty Earth encourages companies to send updated versions of mill disclosures as soon as they become available and to share any decision to suspend relations with a given group/company listed in those mill disclosures; please send to rapidresponse@mightyearth.org.

Mighty Earth is now including biofuel companies in the supply chain tables of Rapid Response reports, as these companies have both direct and indirect trading relationships with groups highlighted in these reports and should be filing grievances on these cases. These biofuel companies are listed in the “Traders and Biofuel Companies” tables.

New Case

Group: Tunas Baru Lampung

PT Samora Usaha Jaya (A)

Concession location: (-3.355969, 105.440277)

Deforestation and/or peat development

Report	Deforestation (ha)	Peat development (ha)	Peat forest development (ha)	Clearance prep/Stacking lines (ha)	Time period
Report 28	6	-	-	-	April 2, 2020–May 6, 2020

Satellite imagery (see below) shows that between April 2, 2020 and May 6, 2020 a total of 6 hectares of forest was cleared in the PT Samora Usaha Jaya (A) concession. (Imagery: Contains modified Copernicus Sentinel data 2020)

Supply Chain Information

Company/Group	Trader	Biofuel Company	Consumer Brand
PT Samora Usaha Jaya (A)	-	-	-
Tunas Baru Lampung	Itochu	-	Avon, Danone, FrieslandCampina, General Mills, Hershey, Kellogg's, Nestle, Unilever

Ownership Information

PT Samora Usaha Jaya (A) is part of Tunas Baru Lampung Tbk.¹

1. Annual Report (2018), Tunas Baru Lampung Tbk, www.tunasbarulampung.com/en/?wpfb_dl=119

Mapping analysis



Alert Imagery (before and after satellite images)

Clearance location: (-3.342740, 105.465633)

Date: April 2, 2020

Date: May 6 2020



Unresolved Case

Group: Tunas Baru Lampung

PT Samora Usaha Jaya (B)

Concession location: (-3.366088, 105.244154)

Deforestation and/or peat development

Report	Deforestation (ha)	Peat development (ha)	Peat forest development (ha)	Clearance prep/Stacking lines (ha)	Time period
Report 19	216	-	-	-	May 18, 2019–August 5, 2019
Report 28	683	-	-	49	August 6, 2019–May 6, 2020

Satellite imagery (see below) shows that between August 6, 2019 and May 6, 2020 a total of 683 hectares of forest were cleared and 49 hectares were prepared for clearing (stacking lines) in the PT Samora Usaha Jaya (B) concession. (Imagery: Contains modified Copernicus Sentinel data 2020)

Supply Chain Information

Company/Group	Trader	Biofuel Company	Consumer Brands
PT Samora Usaha Jaya (B)	-	-	-
Tunas Baru Lampung	Itochu	-	Avon, Danone, FrieslandCampina, General Mills, Hershey, Kellogg's, Nestle, Unilever

Ownership Information

PT Samora Usaha Jaya (B) is part of Tunas Baru Lampung Tbk.²

2 . Annual Report (2018), Tunas Baru Lampung Tbk, www.tunasbarulampung.com/en/?wpfb_dl=119

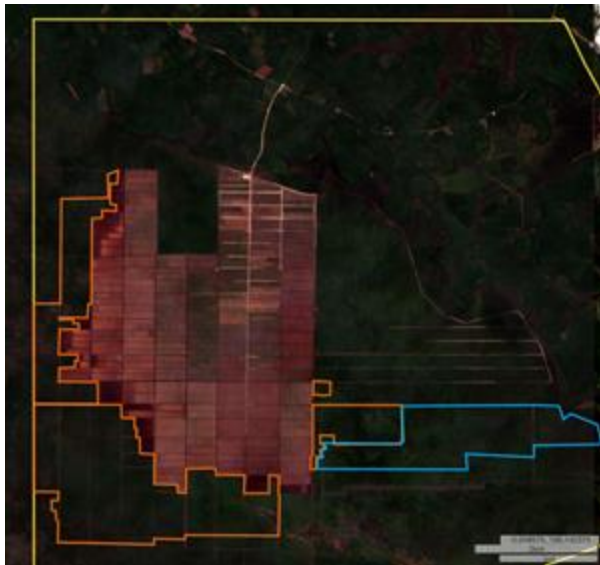
Mapping analysis



Alert Imagery (before and after satellite images)

Clearance location: (-3.337866, 105.215091)

Date: August 6, 2019



Date: May 6, 2020



Unresolved Case

Group: KPN Group

PT Sumatera Unggul Makmur

Concession location: (1.137378, 109.201124)

Deforestation and/or peat development

Report	Deforestation (ha)	Peat development (ha)	Peat forest development (ha)	Clearance prep/Stacking lines (ha)	Time period
Report 18	16	-	-	-	May 27, 2019–July 1, 2019
Report 28	11	-	-	-	March 10, 2020–May 4, 2020

Satellite imagery (see below) shows that between March 10, 2020 and May 4, 2020 a total of 11 hectares of forest were cleared in the PT Sumatera Unggul Makmur concession. (Imagery: Contains modified Copernicus Sentinel data 2020)

Supply Chain Information

Company/Group	Trader	Biofuel Company	Consumer Brand
PT Sumatera Unggul Makmur	-	-	-
KPN Group	AAK, ADM, Felda IFFCO, Fuji Oil, KLK, Louis Dreyfus, Olam, Sime Darby, Wilmar	-	Colgate-Palmolive, FrieslandCampina, General Mills, Hershey's, Kellogg's, Mars, Nestle, PepsiCo, Reckitt Benckiser

Ownership Information

PT Sumatera Unggul Makmur is part of the KPN Group.³

³ . KPN website, <http://kpnplantation.com/>

Mapping analysis



Alert Imagery (before and after satellite images)

Clearance location: (1.132709, 109.221850)

Date: March 10, 2020

Date: May 4, 2020



Unresolved Case

Group: QL Resources Bhd

PT Pipit Mutiara Indah

Concession location: (3.349026, 117.220382)

Deforestation and/or peat development

Report	Deforestation (ha)	Peat development (ha)	Peat forest development (ha)	learance prep/Stacking lines (ha)	Time period
Report 21	50	-	-	-	January 3, 2019– October 20, 2019
Report 28	7	-	-	-	December 22, 2020– April 20, 2020

Satellite imagery (see below) shows that between December 22, 2020 and April 20, 2020 a total of 7 hectares of forest were cleared in the PT Pipit Mutiara Indah concession. (Imagery: Contains modified Copernicus Sentinel data 2020)

Supply Chain Information

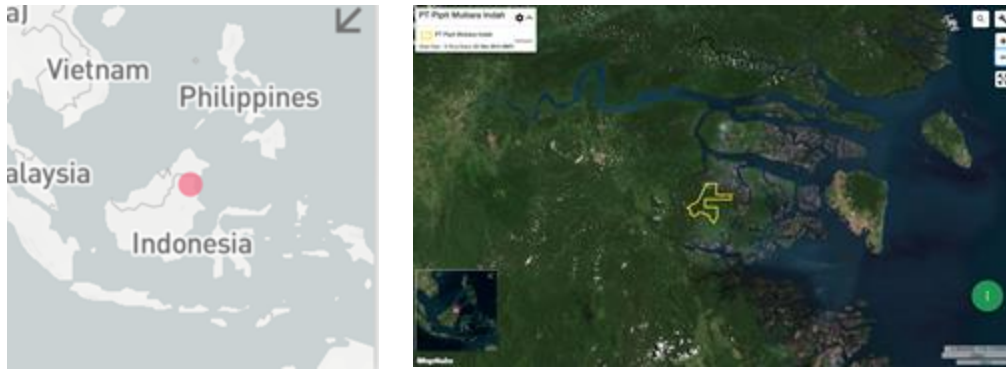
Company/Group	Trader	Biofuel Company	Consumer Brand
PT Pipit Mutiara Indah	Genting	Neste	Avon, Colgate-Palmolive, Danone, General Mills, Hershey, Kellogg's, Mars, Mondelez, Nestle, Nisshin OilliO, P&G, PepsiCo, PZ Cussons, Reckitt Benckiser, Unilever
QL Resources Bhd	AAK, Cargill, Fuji Oil, Genting, Itochu, Mewah, Wilmar	Neste	Avon, Colgate-Palmolive, Danone, FrieslandCampina, General Mills, Hershey, ISF, Kellogg's, Mars, Mondelez, Nestle, Nisshin OilliO, P&G, PepsiCo, PZ Cussons, Reckitt Benckiser, Unilever, Upfield, Vandemoortele

Ownership Information

PT Pipit Mutiara Indah is part of QL Resources Bhd.⁴

4. Annual Report (2019), QL Resources Bhd, <http://ql.listedcompany.com/misc/ar2019.pdf>

Mapping analysis



Alert Imagery (before and after satellite images)

Clearance location: (3.402881, 117.242221)

Date: December 22, 2020



Date: April 20, 2020



Additional cases identified using screened GLAD alerts

The following cases have been identified through screened GLAD alerts (see methodology below). As these cases are either repeat cases from previous Rapid Response reports or where Mighty Earth did not determine any supply chain links for these concessions/groups, no satellite image analysis was conducted for these cases to save resources.

Mighty Earth expects that palm oil traders and biofuel companies conduct their own satellite image analysis of these cases and, if confirmed to be deforestation/peatland development, conduct due diligence to determine if they are exposed to associated companies/groups.

Methodology:

For Indonesia, GLAD alerts are screened using the Indonesia Ministry of Forestry and the Environment land cover dataset for 2017 which classifies existing palm oil plantations and primary and secondary forest. Hence, only GLAD alerts in primary and secondary forest according to that dataset are included.

For Malaysia, GLAD alerts are screened to exclude known plantation areas using the Global Forest Watch (GFW) plantations dataset. This automatically eliminates the most common false positives, i.e. the replanting of palm that existed prior to the year 2000.

New Cases – Unknown Supply Chain Links			
Concession license area	Group/ownership	Area covered by screened GLAD alerts (ha)	Time period
PT Asia Mukti Lestari	Mukti Group	5ha	4/21/20-5/21/20

Repeat Cases – Known Supply Chain Links

Concession license area	Group/ownership	Area covered by screened GLAD alerts (ha)	Time period	Rapid Response reports related to each case*
PT Permata Sawit Mandiri	PT Suryaborneo Mandiri	484ha	4/21/20-5/21/20	15, 16, 17, 19, 20, 23, 24, 27
PT Rimbun Sawit Papua	Salim/IndoGunta	90ha	4/21/20-5/21/20	3, 10, 13 14, 16, 17, 18, 20, 23, 25, 26
PT Persada Era Agro Kencana	Mulia Sawit	83ha	4/21/20-5/21/20	9-12, 15-20, 22-24, 25, 27
PT Mekar Karya Kahuripan	Makin Group	66ha	4/21/20-5/21/20	17, 21-23, 26, 27
PT Rimbun Sawit Papua	Salim/IndoGunta	56ha	4/21/20-5/21/20	3, 10, 13, 14, 16-18, 20, 23, 25, 26
PT Mulia Inti Perkasa	Widya Corporation	50ha	4/21/20-5/21/20	6, 15, 16, 20-26, 27
PT Agrindo Sukses Sejahtera	Starmas Sentosa Mandiri	48ha	4/21/20-5/21/20	8, 6, 22, 26, 27
PT Berau Karetindo Lestari	Korompis Family	47ha	4/21/20-5/21/20	2, 6, 9, 15, 16, 19-22, 27
PT Medcopapua Hijau Selaras	Capitol Group	31ha	4/21/20-5/21/20	25, 26, 27
PT Tunas Borneo Plantations	Samling Group	26ha	4/21/20-5/21/20	18, 27

*Rapid Response reports available on Mighty Earth's Rapid Response website page, [linked here](#).

Repeat Cases – Known Supply Chain Links

Concession license area	Group/ownership	Area covered by screened GLAD alerts (ha)	Time period	Rapid Response reports related to each case*
PT Makmur Jaya Malindo	Pinehill Pacific Bhd	22	4/21/20-5/21/20	18, 19, 27
PT Citra Agro Abadi	Cilandry Anky Abadi Group	14.	4/21/20-5/21/20	17, 23, 25, 26
PT Kusuma Alam Sari	Alas Kusuma Group	11	4/21/20-5/21/20	7, 17, 23, 26
PT Tri Investama	Green Yield Pte Ltd	11	4/21/20-5/21/20	20-25, 27
PT Jaya Jadi Utama	CB Industrial Product Holding	10	4/21/20-5/21/20	15, 20, 23, 26, 27
PT Palembang Segar Lestari	Henan Jiujiu Chemical Co Ltd & PT Citra Makmur Sentosa	8	4/21/20-5/21/20	5, 7, 12, 16, 18, 20-23, 26, 27
PT Pinang Witmas Abadi	Pundi Group	7	4/21/20-5/21/20	10-12, 16, 18
PT Sabhantara Rawi Sentosa	DnistSurya Nusantara	7	4/21/20-5/21/20	21, 23, 26, 27
PT Sawit Mandiri Lestari	PT Sawit Sumbermas Sarana Tbk	6	4/21/20-5/21/20	3, 8, 7, 9, 10, 14
PT Internusa Jaya Sejahtera	Indonusa Group	6	4/21/20-5/21/20	7, 10-12, 15, 22, 28
PT Agro Subur Permai	Salim Group	6	4/21/20-5/21/20	20, 21
PT Persada Era Agro Kencana	Mulia Sawit Group	6	4/21/20-5/21/20	9, 10, 11, 12, 15, 20, 25, 27

*Rapid Response reports available on Mighty Earth's Rapid Response website page, [linked here](#).

Repeat Cases – Known Supply Chain Links

Concession license area	Group/ownership	Area covered by screened GLAD alerts (ha)	Time period	Rapid Response reports related to each case*
PT Ginang Fohu Plantation	Bukit Berlian Plantation Group	5	4/21/20-5/21/20	17, 23
PT Rimbun Sawit Papua	Salim/IndoGunta	5	4/21/20-5/21/20	3, 10, 13, 14, 16-18, 20, 23, 25, 26
LPF/0007 Samling Jelalong (OP)	Samling Group	307	4/21/20-5/21/20	18-21, 23-27
LPF/0008 Marudi & Batu Belah	Samling Group	119	4/21/20-5/21/20	13, 17, 19, 20, 21, 24, 25, 26
Timrest Sdn Bhd	Rimbunan Hijau Group	6	4/21/20-5/21/20	21, 27

*Rapid Response reports available on Mighty Earth's Rapid Response website page, [linked here](#).

Repeat Cases – No Known Supply Chain Links

Concession license area	Group/ownership	Area covered by screened GLAD alerts (ha)	Time period	Rapid Response reports related to each case*
PT Kayan Plantation	Unknown Group	21	4/21/20-5/21/20	15-23
PT Kukar Commodities Worldwide	Unknown Group	15	4/21/20-5/21/20	21
PT Ichiko Agro Lestari	Unknown Group	15	4/21/20-5/21/20	14, 16, 17, 19, 20, 21, 23, 24, 26
PT Tualang Raya	Unknown Group	10	4/21/20-5/21/20	27
PT Artanusa Agrindo	Unknown Group	9	4/21/20-5/21/20	18, 19, 21
PT Sawit Berkat Sejahtera	Unknown Group	9	4/21/20-5/21/20	12, 15, 19
PT Sebaung Sawit Plantation	Unknown Group	9	4/21/20-5/21/20	8, 12, 13, 16, 20, 21, 22, 23, 25, 27
PT Gapura Alas Lestari	Unknown Group	12	4/21/20-5/21/20	16, 19, 20, 23, 25, 26, 27
PT Gapura Alas Lestari	Unknown Group	8	4/21/20-5/21/20	16, 19, 20, 23, 25, 26
PT Bhakti Usaha Dinamika	Unknown Group	7	4/21/20-5/21/20	14, 21
PT Banyan Tumbuh Lestari	Unknown Group	6	4/21/20-5/21/20	27
Koperasi Usaha Mandiri	Unknown Group	6	4/21/20-5/21/20	17, 19-24
Koperasi Bakung Agri	Unknown Group	5	4/21/20-5/21/20	22, 23

*Rapid Response reports available on Mighty Earth’s Rapid Response website page, [linked here](#).

The work of Mighty Earth is supported by Waxman Strategies. Waxman Strategies’ work on forest conservation is funded in part by Aidenvironment. Waxman is required under 22 U.S.C. § 614 to disclose that this material is distributed on behalf of the aforementioned organization, working under grant from the Norwegian Agency for Development Cooperation. Additional information is on file with the Department of Justice, Washington, D.C.