



MIGHTY EARTH

## MIGHTY EARTH FIELD INVESTIGATION – MARCH 2018

Case studies, photos and videos from 19 locations across Argentina and Paraguay

# ARGENTINA





## Argentina Case Study 1 - Protocervik



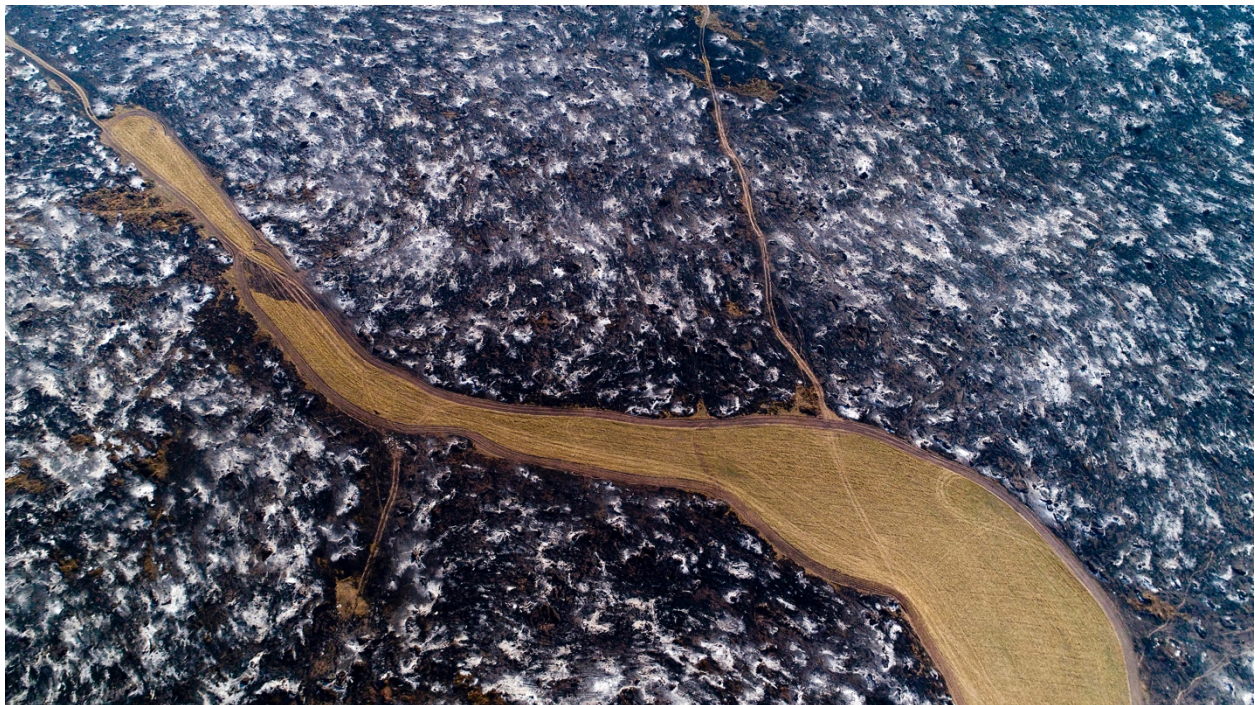
**July 20, 2016**



**November 6, 2017**

They grow soy that the farmers told us is sold to Bunge, a main trader in the region, in Avia Terai.

GPS 26° 55' 24.48"S 60°29' 21.73"W







**VIDEO:** [https://www.dropbox.com/home/Argentina%20%2B%20Paraguay/Videos?preview=DJI\\_0286\\_Argentina.MOV](https://www.dropbox.com/home/Argentina%20%2B%20Paraguay/Videos?preview=DJI_0286_Argentina.MOV)

## Argentina Case Study 2 - Javier and Elisa Milan



**July 21, 2016**



**November 6, 2017**

The soy grown here is sold in Rosario. Property workers told us they believe the main buyers are Cargill and Bunge.

GPS 26°31'43.28"S 60°19' 2.96"W, GPS 26°31'42.05"S 60°19'23.74"W







**VIDEO:** <https://www.dropbox.com/home/Mighty%20Burger%20King%20results/Paraguay%20and%20Argentina/Argentina?preview=Argentina+CS2.1+%26+CS2.2+07%3A21%3A16+-+11%3A06%3A17.mov>

### Argentina Case Study 3 - Picoli



**February 7, 2016**



**November 6, 2017**

They only produce soy and sell to a local cooperative called [Cooperativa Avellaneda](#).

GPS 26°29'58.92"S 60°24'16.96"W , 26°29'48.23"S 60°24'6.79"W

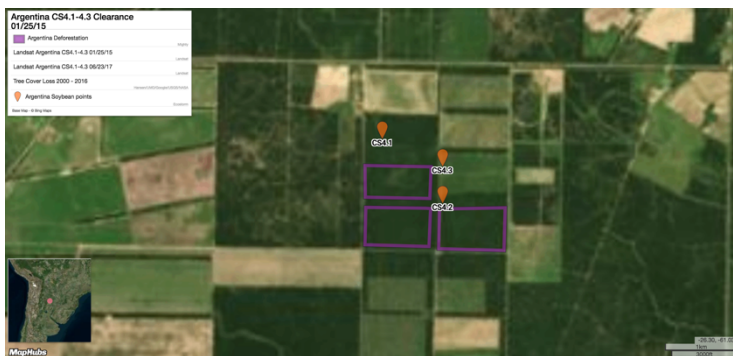




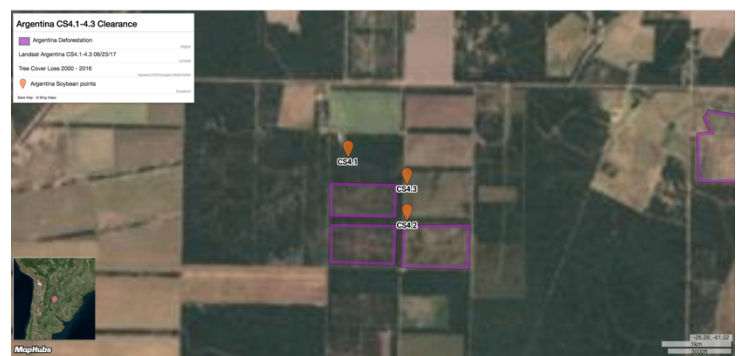


**VIDEO:** <https://www.dropbox.com/home/Mighty%20Burger%20King%20results/Paraguay%20and%20Argentina/Argentina?preview=Argentina+CS3.1+%26+CS3.2+02%3A07%3A2016+-+11%3A06%3A2017.mov>

## Argentina Case Study 4 - La Elva's neighbors



**January 25, 2015**

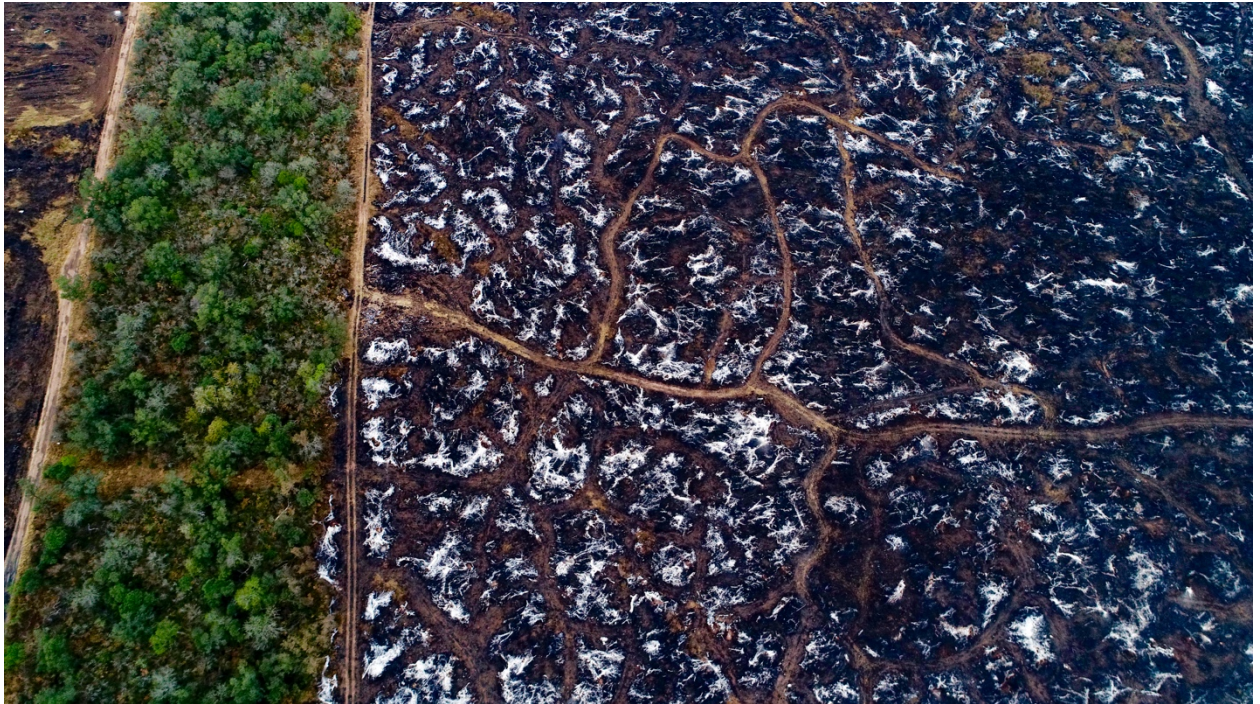


**June 23, 2017**

The area was deforested for soy that is transported to Rosario by trucks. This land belongs to a famous local businessman.

GPS 26°18'15.8"S 61°0'13.32"W , 26°18'44.38"S 60°59'43.64"W , 26°18'28.03"S 60°59'43.71"W



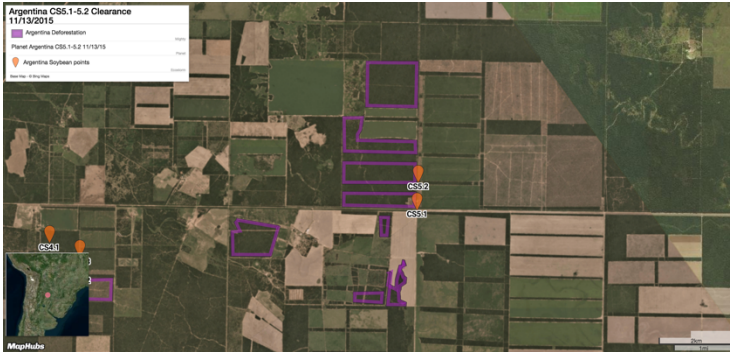


**VIDEO:**

[https://www.dropbox.com/sh/4lpps3qaewayklh/AABk6UPQ8gECr8aJNY904xvRa?dl=0&preview=DJI\\_0275\\_Argentina.mp4](https://www.dropbox.com/sh/4lpps3qaewayklh/AABk6UPQ8gECr8aJNY904xvRa?dl=0&preview=DJI_0275_Argentina.mp4)



## Argentina Case Study 5 - MSU



**November 13, 2015**



**November 5, 2017**

This land is rented to MSU, one of the largest crop businesses in Argentina. The wood from this area is used to make charcoal.

GPS 26°17' 47.13"S 60°54' 18.48"W , 26°17'23.3"S 60°54'17.46"W



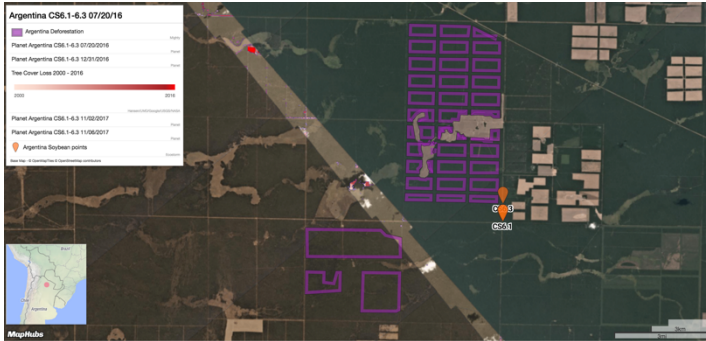




VIDEO: [https://www.dropbox.com/home/Argentina%20%2B%20Paraguay/Videos?preview=DJI\\_0400\\_Argentina.MOV](https://www.dropbox.com/home/Argentina%20%2B%20Paraguay/Videos?preview=DJI_0400_Argentina.MOV)



## Argentina Case Study 6 - La Rejas



**July 20, 2016**



**November 16, 2017**

They grow corn, maize, sunflower and soy. The property made national news, as it as considered a case of illegal deforestation by federal law.

GPS 25°39' 4.76"S 61°29' 47.68"W , 25°39'4.28"S 61°29'47.58"W , 25° 38'35.71"S 61°29' 47.07"W



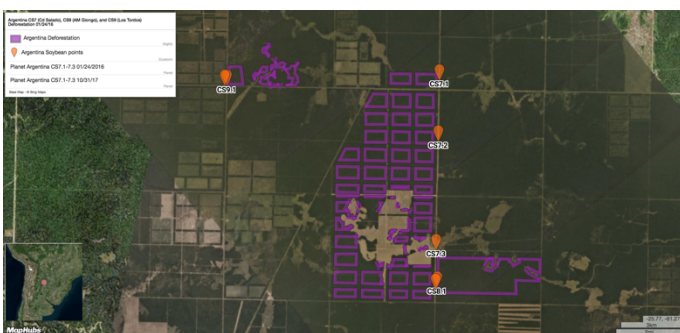




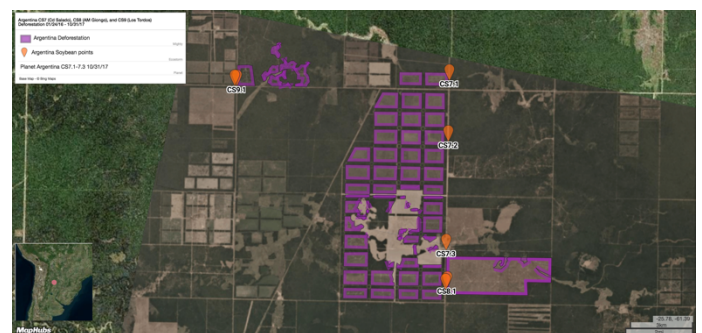
## VIDEOS:

- [https://www.dropbox.com/sh/4lpps3qaewayklh/AABk6UPQ8gECr8aJNY904xvRa?dl=0&preview=DJI\\_0478\\_Argentina.mp4](https://www.dropbox.com/sh/4lpps3qaewayklh/AABk6UPQ8gECr8aJNY904xvRa?dl=0&preview=DJI_0478_Argentina.mp4)
- [https://www.dropbox.com/sh/4lpps3qaewayklh/AABk6UPQ8gECr8aJNY904xvRa?dl=0&preview=DJI\\_0480\\_Argentina.mp4](https://www.dropbox.com/sh/4lpps3qaewayklh/AABk6UPQ8gECr8aJNY904xvRa?dl=0&preview=DJI_0480_Argentina.mp4)
- [https://www.dropbox.com/sh/4lpps3qaewayklh/AABk6UPQ8gECr8aJNY904xvRa?dl=0&preview=DJI\\_0495\\_Argentina.mp4](https://www.dropbox.com/sh/4lpps3qaewayklh/AABk6UPQ8gECr8aJNY904xvRa?dl=0&preview=DJI_0495_Argentina.mp4)

## Argentina Case Study 7 - Cuenca del Salado S.A.



**January 24, 2016**



**October 31, 2017**



Soy is grown here and sent to Rosario. We did not meet anyone who knew the traders that purchase the soy.

GPS 25°44' 33.15"S 61°17' 51.33"W , 25° 46' 7.29"S 61°17' 53.39"W , 25°48'53.53"S 61°17'57.16"W

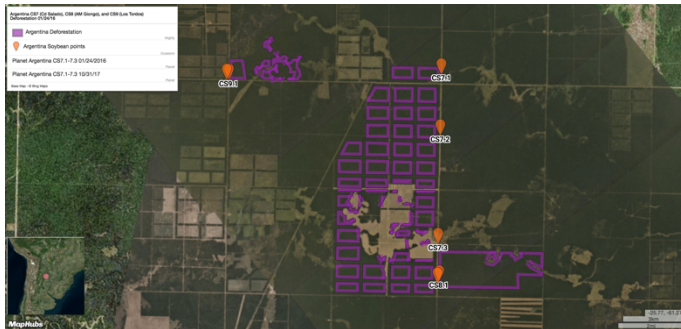




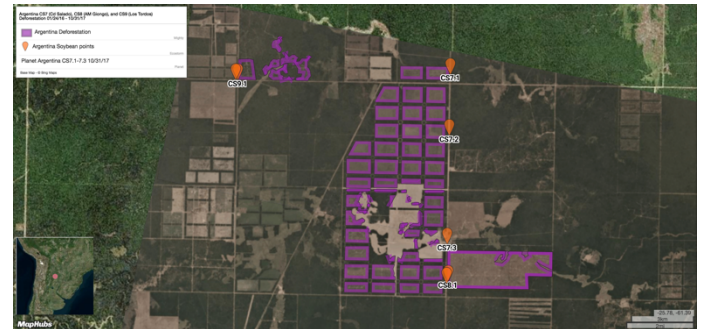
## VIDEOS:

- [https://www.dropbox.com/home/Argentina%20%2B%20Paraguay/Videos?preview=DJI\\_0579\\_Argentina.MOV](https://www.dropbox.com/home/Argentina%20%2B%20Paraguay/Videos?preview=DJI_0579_Argentina.MOV)
- [https://www.dropbox.com/sh/4lpps3qaewayklh/AABk6UPQ8gECr8aJNY904xvRa?dl=0&preview=DJI\\_0586\\_Argentina.mp4](https://www.dropbox.com/sh/4lpps3qaewayklh/AABk6UPQ8gECr8aJNY904xvRa?dl=0&preview=DJI_0586_Argentina.mp4)

## Argentina Case Study 8 - Adriana Melissa Giongo



**January 24, 2016**

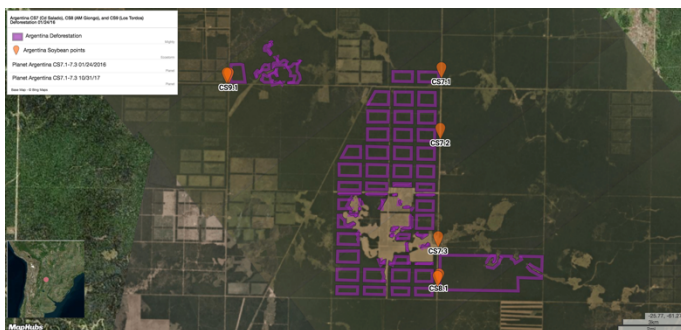


**October 31, 2017**

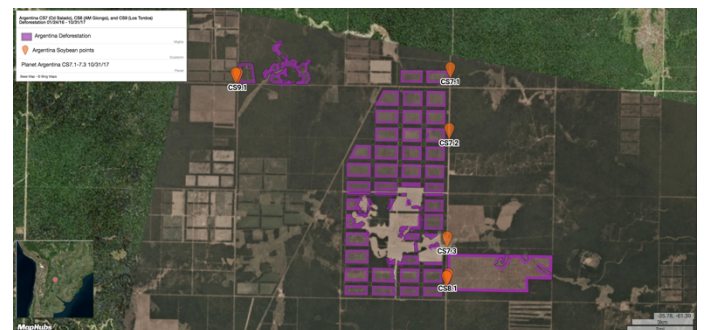
The land is used to farm cattle, not soy. There were signs of recent bulldozing activity.

GPS 25°49'50.83"S 61°17'55.58"W, 25°49'54.35"S 61°17'57.8"W

## Argentina Case Study 9 - Los Tordos S.A.



**January 24, 2016**



**October 31, 2017**

The owner of the land is a company called [Los Tordos S.A.](#) It is registered as a company who cultivates grains.

GPS 25°44'42.11"S 61° 23'54.19"W, 25°44'41.77"S 61°23'57.69"W







## Argentina Case Study 10 - Marco Rosich



The farmers told us this area supplies soy to Bunge. We documented a clearly intentional fire at night clearing native forest in a farm close to Avia Terai.

GPS 26°41'59.78"S 60°42'35.68"W, 26°42'49.33"S 60°40'42.09"W





### **Argentina Case Study 11 - Interview with Red de Salud Popular Ramón Castillo**

Researchers interviewed the doctor María del Carmen Seveso, member of the Red de Salud Popular Ramón Castillo. For years, she has been collecting data from hospital that builds a strong link between health problems and pesticide use related to grain crops in the Argentinean Chaco. A lot of data is given in the interview, so a transcript needs to be done. A lot of her studies can be found [here](#) too. Basically, her studies show that the number of patients with cancer, miscarriages and babies being born with bad-formation has increased significantly and it is closely linked to intensive use of glyphosate to spray soy fields in the region. She also spoke of a recent study (can be requested by email) that shows that levels of pollution due to pesticides in Avia Terai are 400 times higher than it should be accepted as normal. Dr. Severo puts researchers in contact with two families (Camila and Aixa, see below) that could have been victims of pesticide contamination responsible for serious health problems.



## **Argentina Case Study 12 - Campesino woman poisoned**

Researchers interviewed Catalina Cendra, 40. She and her family have a small rural property close to the city of Napenai, in the Chaco department. In 2014, the situation became unbearable. She was sprayed by planes that used to fly over her house to fumigate soy fields close by. Herself and her two daughters suffered from skin allergies and stomach problems. Plants died and the water was poisoned too. She says many people who live in Napenai suffered like her, but they are afraid to speak out. Many decided to leave the rural areas and now live in the cities. She became an activist and after she spoke out planes no longer fly over her land. But she is still traumatized and hasn't recovered fully from her health problems.





### **Argentina Case Study 13 - Girl born with malformation**

Researchers interviewed Silvia Achaval, 43. She lives in Avia Terai and is the mother of Camila, a six year-old girl who was born with malformation problems. All her organs were out of place and she had tumours behind her eyes when she was born. She needed surgery when she was only a few days-old and she was very lucky to survive, as 9 out of 10 kids born in a similar condition do not survive. Doctor Severo believes her problems could have been caused by pesticide contamination, especially glyphosate which is closely linked to fetal malformation, as the family house is very close to an aerial spraying company that fumigates soy fields closeby. The planes use to fly over the village before locals started protesting and getting media attention. Her mother decided to speak out because she does not want other kids to have the same problem. She says that are many other kids with serious health

problems related to pesticide contamination in the town, but they do not like to speak out because soy and other grains are very important for the local economy.

GPS references – Silo Bunge Avia Terrai: 26° 41'55.53"S 60°45'15.23"W ,

Agrosoluciones: 26°42'29.55"S 60°45'15.23"W

Aerial spraying company (Aplicaciones Agrícolas Del Norte): 26°42'17.19"S 60°43'24.28"W



### **Argentina Case Study 14 - Girl born with skin problem and tumours**

Under the recommendation of Doctor Severo, researchers also interviewed Silvia Ponce, 31. She lives in Avia Terrai and is the mother of Aixa, a nine-year old girl who was born with skin moles all over her body and tumours on her back. Silvia says she was not living in Avia Terrai when she was pregnant, but she was living close to soy fields. She was told by doctors that Aixa's problems could have been caused by pesticide contamination while she was pregnant. Aixa's story has been many times on [international news](#), but her family feels all the exposure has not really solved her problem. Last year she had surgery paid by an Italian foundation, but now the tumours are growing back on Aixa's back, causing her pain. The family does not have money to keep monitoring the tumours and there is a possibility they could become

cancerous at some point. The problem with the moles could not be solved, because in order to remove them, Aixa would be left with scars all over her face and body.





## **Argentina Case Study 15 - Campesinos poisoned by glyphosate**

Researchers also interviewed a family of campesinos who were poisoned by glyphosate in September 2016, in a rural area about 100 km from Resistencia, the capital of the Chaco province. Their neighbor, a small farmer, was 'clearing' the field to start planting (they do not know what would be planted) and it rained and the runoff contaminated their land and the water hole they had for their animals. Around 140 animals (chickens, goats and cows) died and their income was jeopardized severely because these animals are very important not only to feed them, but also to sell and generate income. The family, including the children, also got sick, with skin and digestive problems, and had to go to hospital. They had to leave their small farm for two weeks. Dr. Severo says they would have died if they hadn't. The local authorities were called by Red Salud and they started to investigate, first pointing out that it was glyphosate, but after some time, they refused to give compensation beyond a few goats, and told them to keep quiet. They said if they started speaking out about the case, the local council would remove the licence the family has to run a small carpentry business on their property. Under this intimidation, they preferred not to have their faces showed and asked that their identities be protected. They say other families in the area have had similar stories with contamination coming from soy fields, but they do not want to speak out because of fear. One family, they said, had lost over 30 dogs due to a contamination incident.



# PARAGUAY



## Paraguay Case Study 1 - Campesinos



**August 1, 2016**



**November 13, 2017**

The campesinos rent part of their land to a soy farmer. So it could be the case that, in the future, the deforested area will be used to grow soy, but this could not be confirmed at this stage. According to the campesinos, the farmer sells his production to a trader called Favena.

GPS 23° 52.6409' S 56° 15.3094' W



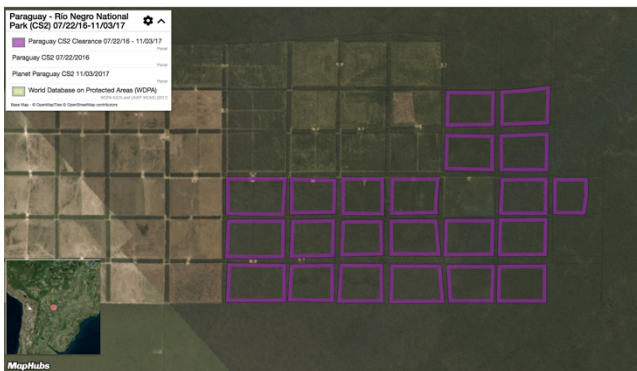




## VIDEO:

[https://www.dropbox.com/sh/4lpps3qaewayklh/AABk6UPQ8gECr8aJNY904xvRa?dl=0&preview=DJI\\_0075\\_Paraguay.mp4](https://www.dropbox.com/sh/4lpps3qaewayklh/AABk6UPQ8gECr8aJNY904xvRa?dl=0&preview=DJI_0075_Paraguay.mp4)

## Paraguay Case Study 2 - Indigenous living at Nueva Esperanza landfill site



**July 27, 2017**



**November 3, 2017**

Investigators documented an area of 5,600 hectares being deforested inside a national park, called Parque Nacional Río Negro/ Sitio RAMSAR/Reserva de la

Biosfera. The area belongs to "Agro-ganadera 3G", and the owner is called Cassio Roberto Gradela. The whole area is being used for cattle ranching.

GPS 19° 56' 24" S 58° 24' 36" W



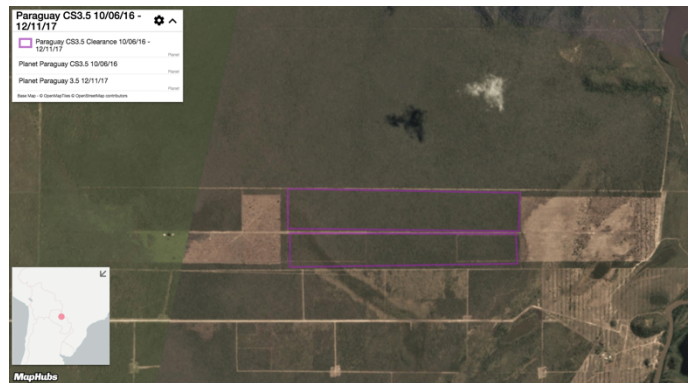




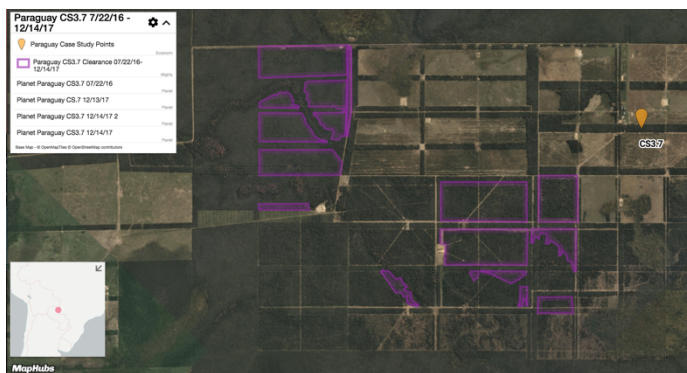
### Paraguay Case Study 3 - Deforestation in the Chaco



**October 6, 2016**



**December 11, 2017**



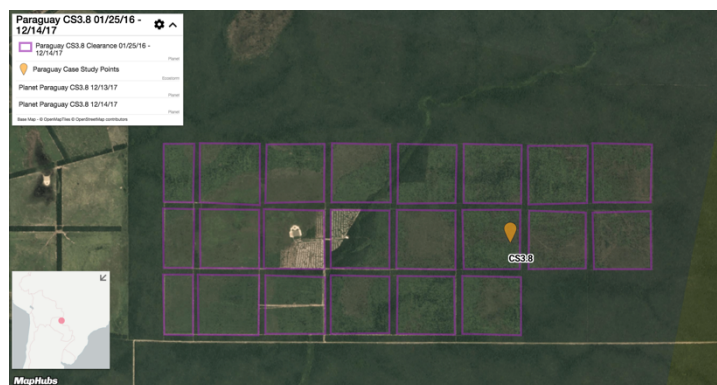
**July 16, 2016**



**December 14, 2017**



**January 25, 2016**



**December 14, 2017**

General images of areas being deforested in the Paraguayan Chaco.

GPS 21° 46' 22.8" S 57° 58' 48" W, 20° 38' 6" S 58° 20' 9.6" W, 20° 32' 52.8" S 58° 20' 56.4" W













### **Paraguay Case Study 4 - Y'apo Community**

GPS 24° 8' 31.9999" S 58° 20' 56.4" W, 24° 30' 55.9872" S 55° 1' 2.7156" W

In 2014, the community was invaded by 50 armed security guards hired from a neighboring farm called 'La Laguna', owned by the group 'La Americana'. The farm previously deforested 1,000 hectares of the indigenous land and had been accusing them of invading their private territory (trespassing). The indigenous community say the guards came to force them to leave the area. They invaded houses, assaulted the adults and children and kicked pregnant women – some of which lost their babies. Thirty-two members of the community were hurt. Three guards were hit by gunshots, and seven indigenous. One guard was killed. An article written by Conapi, the indigenous association who helps the community, is [available here](#), with pictures.









### **Paraguay Case Study 5 - Indigenous living at Nueva Esperanza landfill site**

Ecostorm interviewed Candida Ferreira Benitez, a 46 year-old indigenous woman who lives at the landfill site of the city of Nueva Esperanza, in Canindeyu department. Candida was the first one to leave her tribe, the Arroyo Guazu, in Alto Parana department, to live in the landfill site. She decided to abandon her community 13 years ago because the forest was cut down to make space for soy farms; there were no animals to hunt, no fruits to collect from the forest, no wood to build houses. The indigenous started renting their land to soy farmers, but as she was a single mother, she never received any money and she was struggling to survive. She found a job at the landfill site and after her, ten more families from the same community came to live and work with her. She wishes she could go back to live in the forest, but there is no forest left.



